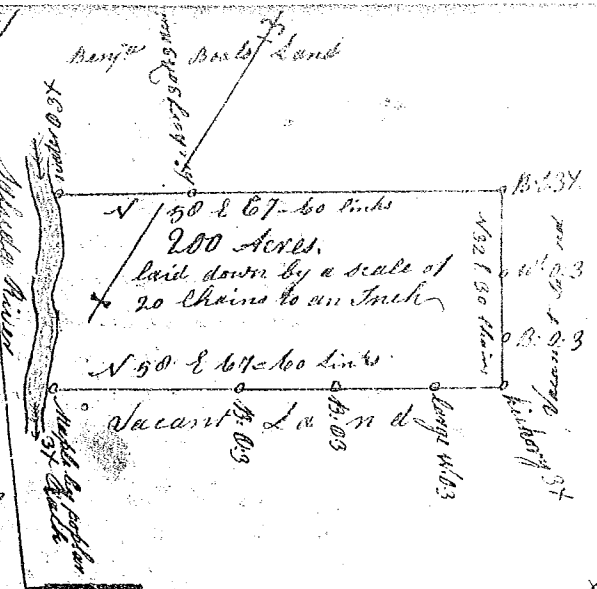


South Carolina

95

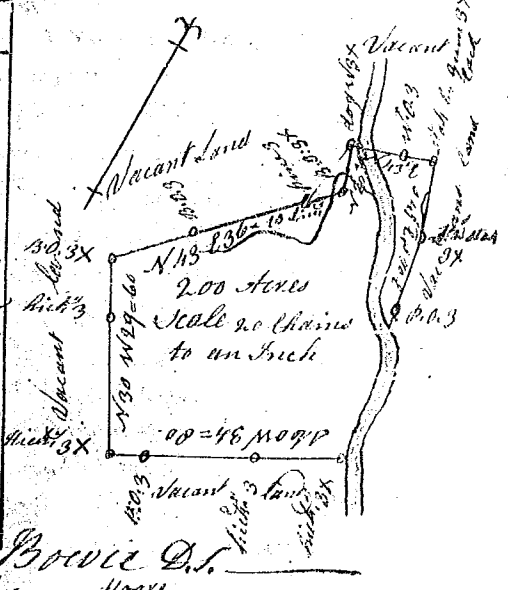
Pursuant to a warrant from John Thomas Esq^r Commissioner of Locations in the District of Ninety Six bearing date the 24th day of July 1784 I have Admeasured and laid out unto Thomas Fisher a Tract of two Hundred acres of land Situate in Ninety Six District on the north side of Saluda river below the Ancient Boundary line. Bounded to the N. W. on Benj^r Boales Land to the S. W. on Saluda River and all Other sides Vacant Land and hath such Shape form and marks as the above plat Represents Surveyed this 3rd day of August 1784



Recorded the 24th day of August 1784
 Del^d to John Moore

South Carolina

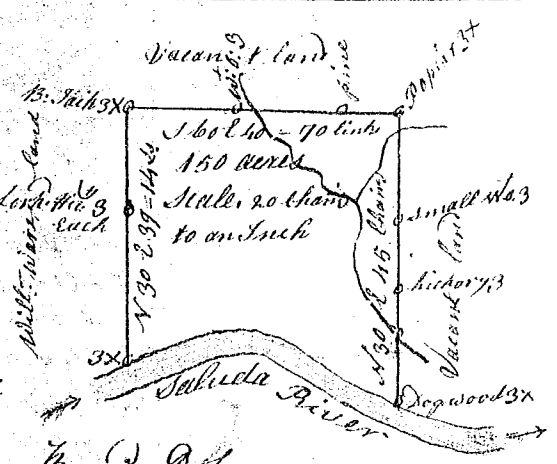
Pursuant to a warrant from John Thomas Esq^r Commissioner of Locations in the District of Ninety Six bearing date the 24th day of May 1784. I have Admeasured and Out unto Robt. M. Voss a tract of ~~two~~ two hundred acres of Land Situate in Ninety Six District on the North of Saluda River below the Ancient Boundary line and lying on both sides of Preedy River Bounding to the E. partly on the P. River and Partly on Vacant Land and all Other sides Vacant Land. and hath such shape and marks as the above plat Represents Surveyed the 5th day of August 1784



Recorded the 24th day of August 1784
 Del^d to John Moore

South Carolina

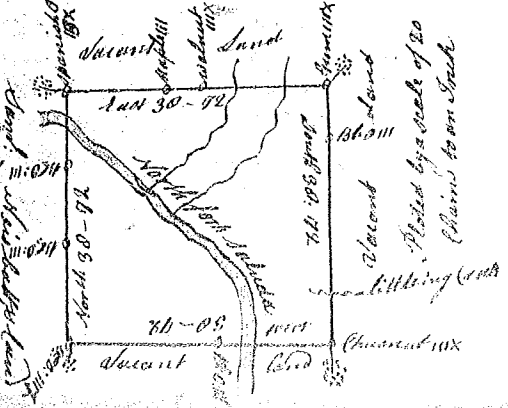
Pursuant to a warrant from John Thomas Esq^r Commissioner of Locations in the District of Ninety Six Bearing date the 24th day of July 1784 I have Admeasured and laid out unto James Barremore a Tract of land Containing One hundred and fifty acres below the Ancient Boundary line Situate in Ninety Six District on the North side of Saluda river bounding to the N. W. on Land Surveyed for Wm. Ware to the S. W. on said river and on all other sides on Vacant Land and hath such shape and marks as the above plat Represents



Surveyed the 3rd day of August 1784
 Recorded the 24th day of August 1784
 Del^d to John Moore

State of South Carolina

Pursuant to a warrant under the hand and seal of John Thomas Esq^r Commissioner of Location dated the 24th day of May 1784 I have admeasured and laid out unto Robert Kishbath a tract of land containing one hundred and fifty acres at the Mouth of Fall Creek on both sides of the North fork of Saluda River. Bounded to the south by several Acedatto lands, all other sides Vacant Land, and hath such other shapes and Marks as the above Plat Represents



Surveyed the 20th Day of May 1784
 Recorded the 20th August 1784
 Del^d to Andrew Thomson